



**CONNECT**



# The Future of Work is Connected

The world of work continues to evolve at an ever-accelerating pace. Companies that can adapt to change will flourish, even in uncertain, unstable and unpredictable market conditions.

Long term trends around technology adoption and digital transformation have been forced into focus. The one pervading and overwhelming theme can be simply defined as **connected**.

If you're going to enhance productivity and competitiveness in today's environment, you need to empower your team with the technology to work smarter. But much more than a suite of tools, you need the ability to connect to them, seamlessly, securely and cost-effectively.

Demands for more agile, flexible and scalable services dominate the marketplace more than ever before. Being connected is no longer a desire, it's a necessity. Mobile and always-on have become the new normal for business.

We'd love to help you unlock your business potential through a connected workforce and systems.

**Your performance and  
profitability are powered by  
connectivity**





# CONTENTS

The Future of Work	1
Contents	3
About Onwave	5
Wired.	7
Cellular.	9
One.	11
Local.	13
Rapid.	15
Coverage.	17
Satellite.	19
IoT.	21
Cloud.	23
Recover.	25
Secure.	27
Move.	29
OWL.	31
CAP.	33
Design.	35
Meet the Team	37
Join Industry Leaders	39

# About Onwave

We can help you to connect your people, places & assets with technology to improve the performance and efficiency of your business.

We know that to successfully deploy, adopt and manage technology can be complex and costly. Onwave has the people, processes and experience to help you create a streamlined digital workplace.

## COLLABORATIVE

- We listen, learn, design and deliver. We appreciate that one size doesn't fit all.
- We work together to align our services to ensure your business objectives are met.
- We build collaborative long-term relationships with our customers so that we can support you to achieve success.

## EXPERIENCED

- Our management team come from diverse backgrounds, with working knowledge of various sectors in construction, rail, highways, healthcare, government and maritime. We've been on the ground and experienced the demands of your sector first hand.
- Our team is highly skilled in project management, network engineering, systems and product development, enabling us to deliver comprehensive solutions to suit your requirements.

## SOLUTION-FOCUSED

- We get things done and get it done right, both for the short and long term.
- We don't just solve problems, we help identify the source of the challenge and provide the right, or a better, way of doing things.

## RESPONSIVE

- Delivery-focused. The world doesn't wait.
- Customers have a dedicated point of contact, and our team is always ready to help with any enquiry.



Global delivery with over 3000 projects delivered



24/7/365 Support for your business

**72**

Service Deployment in 72 hours or less



Service Engineers located around the UK and global partners mean we're never more than an hour from your project

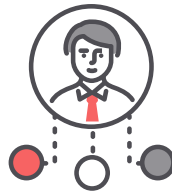


We are carrier agnostic, ensuring we give you the best blend of solutions for your location and project

**100\***

Our Customer Service sets us apart reflected in our leading Net Promoter Score

\*Correct at time of publication



We understand your needs. Our management team has experience covering all industry sectors



Dedicated Account Management. Guidance and advice from the person who will help deliver your solution

**99.99% uptime**

Reliability. Connectivity drives your business, so our uptime delivers for you



# Wired.

## FIXED LINE CONNECTIVITY

Bespoke solutions for less

By working with all the major UK networks, we will find you the most effective solutions to meet your needs and budget.

### MEETING YOUR NEEDS

When it comes to buying fixed-line services, you want a solution that meets your performance and budgetary needs. But more importantly, you need a provider that makes delivery simple and means your teams don't waste time waiting and chasing up providers.

### OUR APPROACH

Whether you're looking for a single line or a mix of services to provide greater uptime and resilience, with **Onwave Wired** we take care of the whole process. Our experienced delivery team offers advice and guidance to help you select the best network and service offering for your business. Once the right solution is chosen, we manage the rest, keeping you informed of progress and delivery dates.



## Improving service and reducing costs for your business.

Whether you are looking to upgrade your existing service, add resilience or improve cost or service performance, we can help.

With a comprehensive range of fixed-line services, from uncontended Ethernet or Fibre, Fibre to the Premises/Cabinet (FTTP/ FTTC), the latest range of SOGEA (Single Order Generic Ethernet Access) services through to traditional copper-based Broadband/ADSL circuits, we deliver the best solution for your business.

All our services can be purchased as stand-alone circuits, allowing you to layer on your own security and firewalls, or used in combination with Onwave Move, One, or any of our other services.

# Cellular.

## MOBILE CONNECTIVITY

We've got you covered

Whether it is connecting your team or assets, mobile is an essential tool in modern business.

Getting your mobile, SIM or cellular services to match perfectly with the operational needs of your business can be a constant struggle. It is easy to over-specify and waste money, or under-specify and get caught with unexpected bills. Despite its importance, the world of mobile remains full of pitfalls for even the most experienced buyer.

### MAKING IT WORK

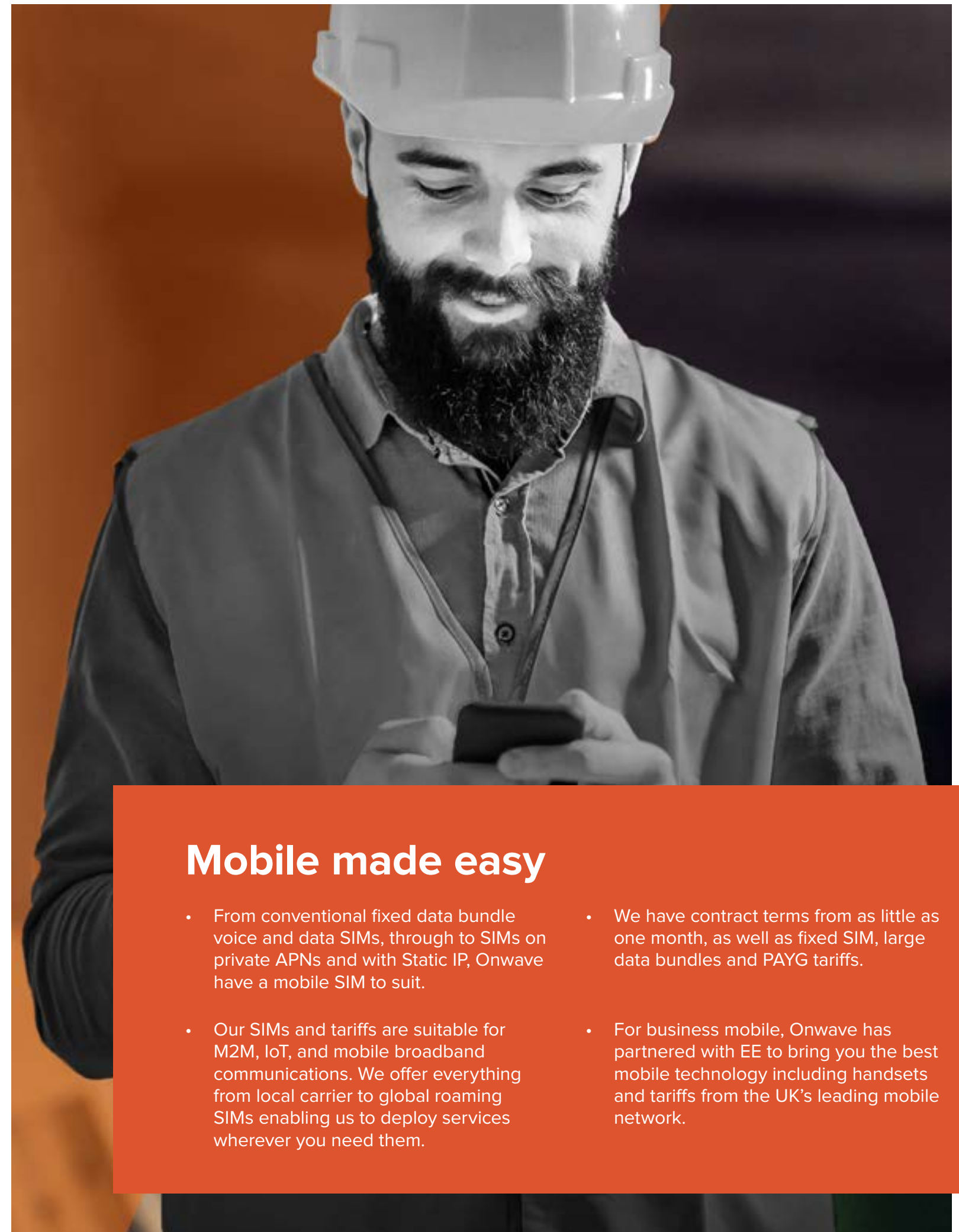
Whether you're looking for voice and data, data-only SIMs, or mobile devices and airtime, with **Onwave Move** we can help you find the right solution for your business. We offer the flexibility you need to stay connected when your people or assets are on the move, increasing productivity and ensuring timely communication flows.

### WHY ONWAVE?

We offer contracts with different:

- data allowances
- data models
- contract lengths
- security options
- and features

We consolidate usage from the networks across our estate so that you can benefit from improved rates, greater flexibility and more choice.



## Mobile made easy

- From conventional fixed data bundle voice and data SIMs, through to SIMs on private APNs and with Static IP, Onwave have a mobile SIM to suit.
- We have contract terms from as little as one month, as well as fixed SIM, large data bundles and PAYG tariffs.
- Our SIMs and tariffs are suitable for M2M, IoT, and mobile broadband communications. We offer everything from local carrier to global roaming SIMs enabling us to deploy services wherever you need them.
- For business mobile, Onwave has partnered with EE to bring you the best mobile technology including handsets and tariffs from the UK's leading mobile network.



# One.

## SD-WAN

Seamless, simplified & scalable

Businesses that can adapt quickly to the demands of markets and customers, that can retain agility, are proven to win more business and ensure greater success. Traditional Wide-Area Network (WAN) architecture can struggle to keep up with the demands of modern, ambitious organisations.

---

### GAIN COMPETITIVE ADVANTAGE

---

To keep a competitive advantage, more and more businesses are transitioning to Software-Defined Wide Area Network (SD-WAN) solutions, to ensure a seamless user experience across apps, platforms and devices, maximising employee productivity levels.

The wider adoption of cloud-based technologies makes resilient business communications a must.

The enhanced visibility and management information available with SD-WAN solutions, alongside high levels of security and the ability to adapt as your business changes, can give your business the edge against the competition.

An SD-WAN can offer significant commercial and service benefits over more traditional Multiprotocol Label Switching (MPLS) or leased lines, which can be rigid in formation, as well as costly to maintain, change and manage.

**Onwave One** makes SD-WAN simple and provides you with a risk-free way to transition away from your traditional services.



## A network to empower your business

Unlike conventional WAN architectures that operate with a high level of dependency on fixed-line services, Onwave offers a fully integrated SD-WAN over a combination of the best available networks.

This approach allows us to move away from the constraints of MPLS and leased lines and to optimise traffic over any form of native WAN connection: bonded cellular, xDSL, FTTC, Fibre, Wireless Ethernet and Satellite. By delivering in this way you achieve the right balance of security, flexibility, resilience and simplicity across your network.

Onwave One SD-WAN makes it easy to add new services or applications, scale bandwidth, change policies and increase resilience as well as giving you centralised control and visibility.

The entire solution is managed by Onwave's in-house network engineering teams so that you can focus on driving more strategic operational and process improvements.

# Local.

## LAN

Don't let your LAN constrain the capability of your network

A first class LAN solution will empower your teams enabling them to truly leverage the power of digital.

---

### BUILT FOR SUCCESS

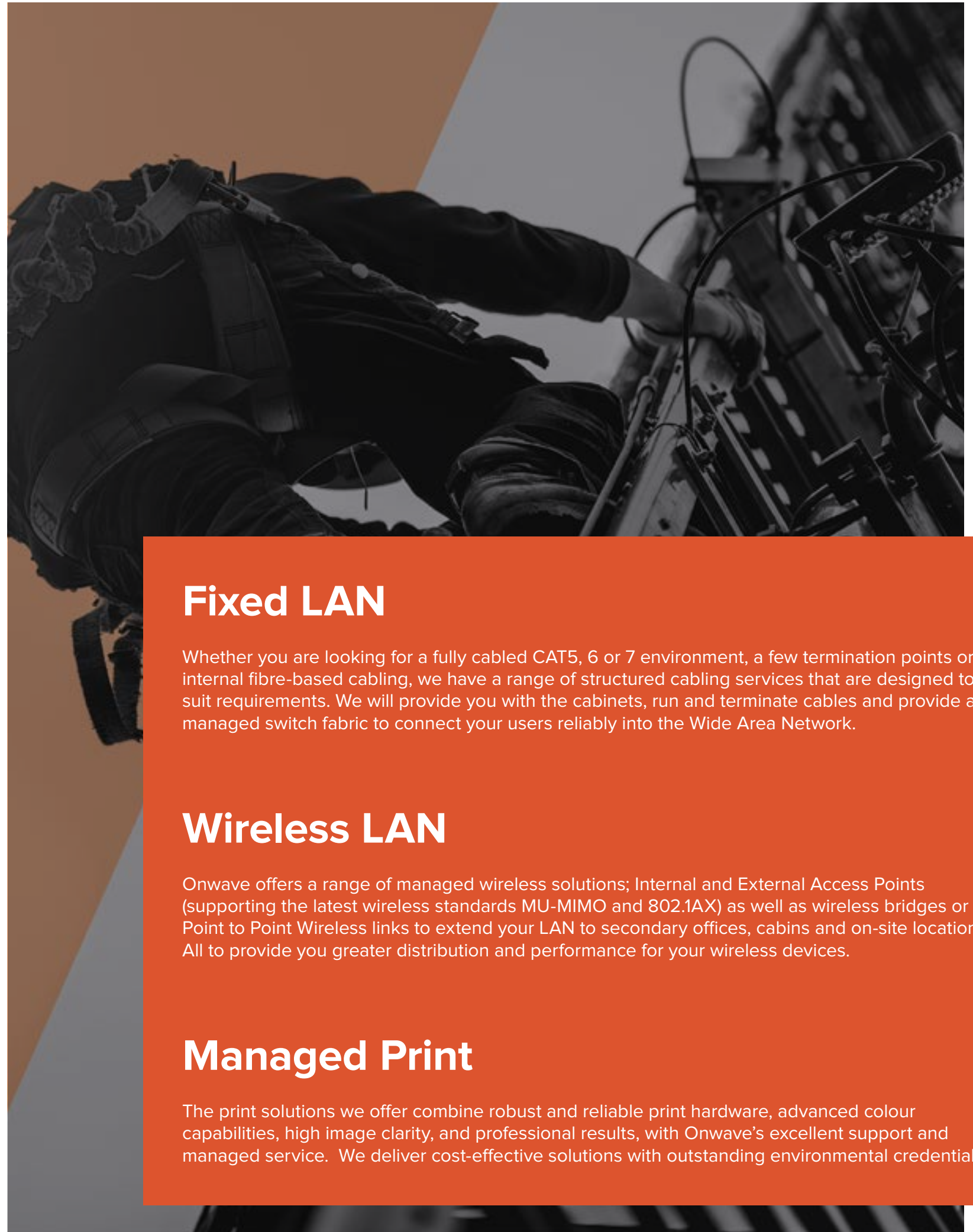
---

Local Area Network (LAN) infrastructure is often overlooked, even though the LAN can have as much impact on end-user experience as the Wide Area Network (WAN) and underlying connectivity infrastructure. For this reason, we treat the LAN and Wireless LAN (WLAN) as key components of your overall service delivery.

Successful businesses harness the maximum capability of their network by deploying wireless and fixed LAN environments built for tomorrow's demands, tailored to the environment and needs of your users.

When you order **Onwave Local** you can be assured that we will design, configure and install your LAN to ensure you get exactly what you need.

So whether you need wired or wireless, separate virtual LANs (VLANs), Network Access Control (NAC-802.1X), Managed or Unmanaged services, we can help.



## Fixed LAN

Whether you are looking for a fully cabled CAT5, 6 or 7 environment, a few termination points or internal fibre-based cabling, we have a range of structured cabling services that are designed to suit requirements. We will provide you with the cabinets, run and terminate cables and provide a managed switch fabric to connect your users reliably into the Wide Area Network.

## Wireless LAN

Onwave offers a range of managed wireless solutions; Internal and External Access Points (supporting the latest wireless standards MU-MIMO and 802.11AX) as well as wireless bridges or Point to Point Wireless links to extend your LAN to secondary offices, cabins and on-site locations. All to provide you greater distribution and performance for your wireless devices.

## Managed Print

The print solutions we offer combine robust and reliable print hardware, advanced colour capabilities, high image clarity, and professional results, with Onwave's excellent support and managed service. We deliver cost-effective solutions with outstanding environmental credentials.



# Rapid.

## RAPID DEPLOYMENT

Connectivity delivery to your timescales

We know that your business and projects won't wait to be connected, but you also can't afford to compromise on quality.

### THE CHALLENGE

Getting the connectivity you need on short timescales has often meant buying Mi-Fi devices or dongles, or users tethering to phones. From a business perspective these all represent a compromise, they can:

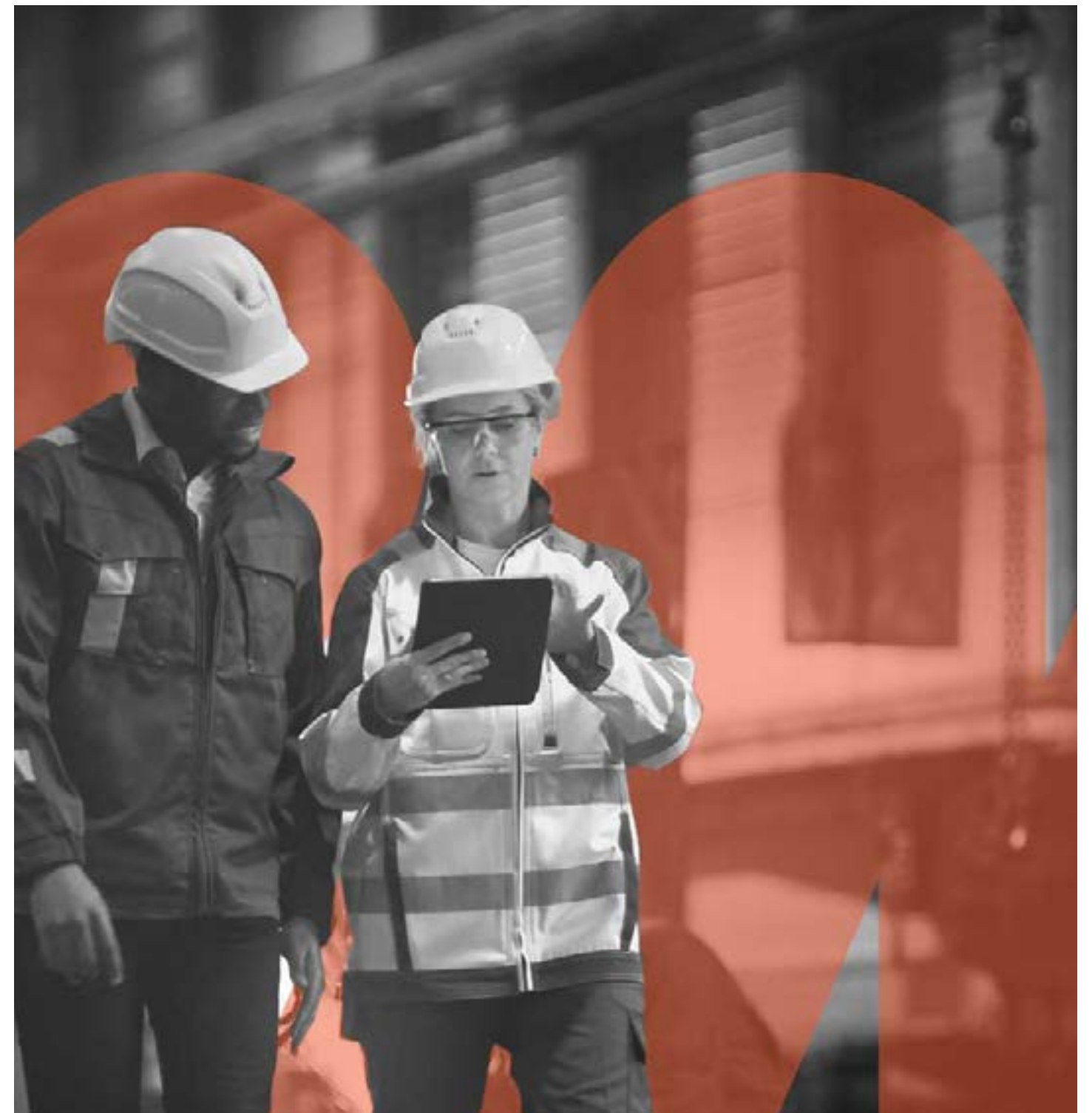
- Be difficult to manage
- Require long contract terms
- Be easily lost or difficult to track
- Limit data usage or have excess data overages £20-30/GB
- Compromise security

### WHAT WE OFFER

Rapid connectivity solutions from Onwave helps eliminate the risks associated with conventional methods of emergency connectivity provision. Our solutions are deployed and operational within 72 hours of order and often sooner in case of emergency.

Delays and disruption cost money, with **Onwave Rapid** you can avoid these issues and limit the cost of downtime for your people. Onwave Rapid provides:

- Business-grade bandwidth
- Simple network integration options
- Scalable and flexible data allowances
- Short-term contracts to ensure you only pay for what you need, when you need it



## Time is money

Onwave use tried, tested and proven multi-WAN cellular technology to provide these rapid connectivity solutions.

Service features such as hot failover and WAN bonding also allow us to transition services painlessly to other WAN services without disruption to your users. This flexibility means that once your Fibre, FTTC or ADSL have been installed or restored, they can be combined with your Onwave solution to give greater resilience and throughput.

# Coverage.

## PRIVATE MOBILE NETWORKS

A dedicated network for critical operations

Take automation and efficiency to the next level by harnessing the power of a private 4G or 5G network.

### THE MARKET HAS CHANGED

Changes to UK Mobile Spectrum licencing regulations have opened up the possibility for businesses or projects to create private networks. Where network coverage is poor and there is need for mobility across a large site or facility it is now possible to apply for a private network licence from Ofcom.

### UPGRADING OPERATIONS

A private network can be used to replace more traditional wireless LAN (WLAN) products on large campuses, data centres, manufacturing facilities or on large external projects to give you greater flexibility and mobility for connecting your people, plant and assets.

With **Onwave Coverage**, priority and quality of service can be assigned to each use case to ensure capacity and resilience is focused where you need.

### WHY ONWAVE?

Onwave is a pioneer in the market, enabling us to deliver Private LTE 4G (Carrier Neutral Host) & 5G network benefits to your project sites.

## Private LTE or 5G Networks

Leading organisations such as National Highways have developed roadmaps to deliver their vision for connected and autonomous equipment and vehicles. Connectivity is key to make these visions a reality. Due to the high data requirements involved, guaranteed high-speed low latency connectivity is essential.

By setting up your private LTE or 5G network as a Carrier Neutral Host (Multi Operator Neutral Host or MONEH), your network can be opened up for customers with SIMs from the four main UK Mobile networks, as well as providing you a dedicated high-performing network slice for your own devices and users. In this mode, all calls, messages and data requests are seamlessly routed back to the subscriber's home mobile network.

An Onwave Coverage private 5G network helps you achieve these benefits:

- Enables the use of connected and autonomous equipment
- 100% connectivity coverage can be achieved across a site
- Reduced project durations due to increased outputs
- Reduced time-related project costs
- Exclusive use with no performance issues
- Reliable even where line of sight is a challenge
- Provide a positive connectivity legacy for local communities.





# Satellite.

## STARLINK

### Low Earth Orbit Satellite

---

#### WHAT IS IT?

---

Starlink, a satellite internet constellation project, provides high-speed internet access to underserved and remote areas around the world.

The Starlink LEO satellite constellation provides a network of thousands of small satellites orbiting the Earth, beaming internet connectivity to ground stations and user terminals all over the world.

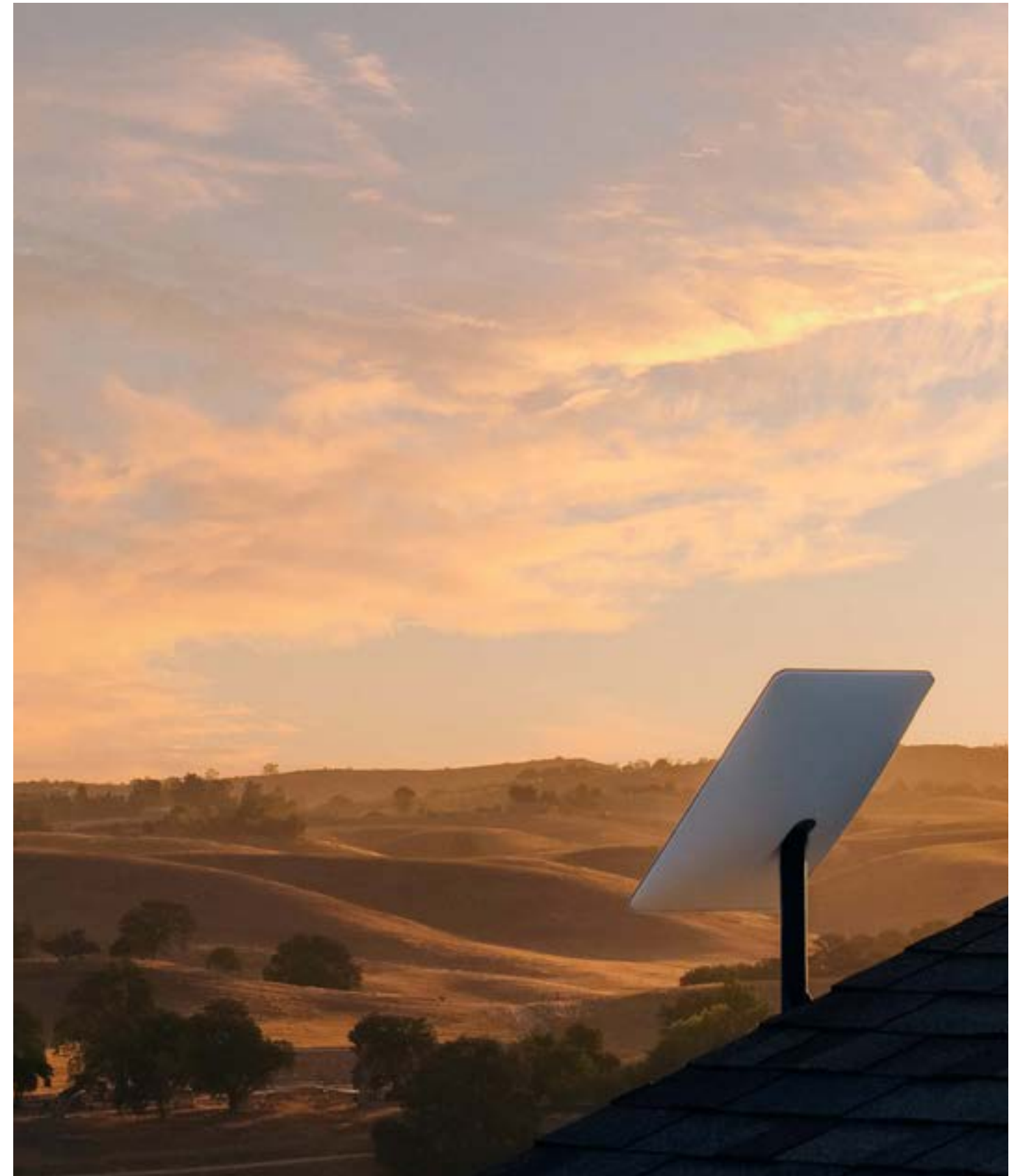
Starlink satellites operate in Low Earth Orbit, reducing latency and improving internet speeds compared to traditional satellite internet services.

---

#### WHAT ARE THE BENEFITS?

---

- Provides Internet connectivity to remote and underserved regions.
- Offers reliability, high-speed and low latency.
- Quick installation getting you up and running for time critical projects.
- A fully managed service including installation and decommissioning.
- Can be used as a back-up or failover option.
- Available to purchase or hire – flexible commercial models to suit your requirements.
- Can be used in a fixed location or for mobile connectivity.
- Greater than 99.5% uptime.
- Simple monthly billing.



**As of April 2024, there were  
5,874 Starlink Satellites in orbit.**

# IoT.

## INTERNET OF THINGS

A smarter way to handle technology

Ensure your organisation is a leader in intelligent working by embracing SMART technology.

By 2030 it is expected that more than 25 billion Internet of Things (IoT) devices will be in operation. The continual growth in IoT is fuelled by the benefits organisations achieve through proactive data gathering, analysis and asset management.

IoT networks typically comprise of three Cs: Connect, Compute and Control.

Onwave's focus is on the Connect element of these three stages: how devices, people and assets are connected via networks to facilitate real-time data exchanges to aid business productivity.

---

### NEW HORIZONS

---

**Onwave IOT** opens up a world of new possibilities, information that was previously unobtainable due to the constraints of size, location and cost is now available. If you can connect data at source and review this in real time you can make decisions that reduce your risk, enhance your operations or improve your customer experience.



## New possibilities

Onwave can help you to securely network your sensors and devices, i.e. vehicles, tools, alarms, street lights, pumps and buildings, anything that you want to connect!

While some devices and sensors connect directly from the edge to the IoT platform, the majority rely on short-range connectivity (XBee, LoRa, SigFox, ZigBee, Bluetooth Low Energy). As a result, reliably collecting data on mass from these sensors to enable remote collation and analysis for subsequent action can prove difficult.

Onwave IoT will help you to navigate the abundance of data sources (things), sensors, actuators and IoT platforms on the market.

We can provide the control and flexibility your IoT network requires, from WAN selection, through to traffic routing and security.

Onwave can create flexible Multi-WANs to allow sensors and devices to be deployed at the edge.

IoT from Onwave delivers the automation and efficiency benefits that you desire.



# Cloud.

## CLOUD INFRASTRUCTURE

Get your ideas off the ground

Moving services to the cloud has genuine productivity and collaboration benefits for your business.

There has been a seismic shift in recent years from traditional on-premise networks and Data Centres (DC) to fast, agile cloud platforms to accommodate business computing.

Microsoft Azure, Amazon Web Services, Google Cloud, as well as a host of hybrid private and public Clouds are now the accepted norms for hosting, backing up and running applications.

---

### MAKE THE MOVE

---

From an operational point of view, moving to the cloud fosters collaboration as you'll be using innovative, reliable and optimised technology that your team can access from anywhere. It's flexible, scalable and always up to date – leaving your team to focus on your work, rather than the hardware in complex data centres.

Enhancing your visibility of services and costs, and with cloud pricing models matched to your operational requirements – you can be sure to only pay for what you need.

---

### WHY ONWAVE?

---

**Onwave Cloud** provides customers with access to cloud services and connectivity to ensure they are always accessible. Onwave experts can help you assess the current demands of your organisation and support the development of a digital business plan and cloud strategy.

We will also assist with the network design, taking full advantage of the possibilities that the cloud provides.



## Onwave Cloud Services

- Private hosting for customer environments within some of the UK's most secure Tier 3 data centres
- Private Networks to connect into these secure environments
- Virtual Data Centres (VDC)
- Cloud architecture advice and delivery
- Cloud backup services

Once you have decided to move your resources to the cloud you will invariably increase the availability of your applications reducing non-productive time for your teams.

# Recover.

## DISASTER RECOVERY

Getting you back up and running when disaster strikes

Only when your connectivity fails do you realise quite how integral it was to your business.

Sadly, the fact remains that “you don’t know what you have until it’s gone”.

Networks are a key component of any operational business whether supporting your phones, Electronic Point of Sale (EPOS) systems, accounts, email or other critical services.

The fact is, the cost of having no service far outweighs the cost of planning and provisioning for a disaster scenario.

---

### WHY ONWAVE?

---

**Onwave Recover** calls on our expertise in providing secure, resilient and reliable networks to help you eliminate the risk of network failure and minimise downtime when you need to urgently deal with an outage.

We also offer data backup solutions to protect from a variety of risks including user error, hardware failure, security breaches, loss or theft of devices, software errors and data leakage.



## Be Prepared

Onwave has a range of secure, high bandwidth, bonded 4G solutions that can be deployed to your offices, alongside Rapid, our focused Rapid deployment service.

Our installation engineers are available nationwide and ready to restore connectivity with minimal delay, giving you one less thing to worry about.

Onwave prefers to eliminate risks within networks by removing single service provider reliance to ensure you always stay connected.

We supply simple low-cost cellular backup solutions, supported by our managed service including technical support and network monitoring to pre-empt issues.



# Secure.

## CYBER SECURITY

Protecting your systems and data 24/7

Cyber Security is a priority for modern organisations. We are here to help protect you from an ever-evolving landscape that can cause untold damage to your business.

### UNDER THREAT

Cyber threats are getting more sophisticated and intense amid the increasing levels of remote work and dependence on digital devices.

From social engineering attacks such as Phishing, through to DDoS and Ransomware attacks, there has been a marked increase in the number of criminals choosing a digital route to extract money or data from businesses.

Even when there is no direct consequence or theft from a business, downtime alone can be crippling and cause serious productivity and process issues – preventing you from generating income.

### MINIMISED RISK

The benefits of a secure network strategy and implementation cannot be underestimated, the impact of a data breach or ransomware attack on businesses are well documented.

**Onwave Secure** helps customers to create secure and private networks, with world class solutions that leverage machine learning and artificial intelligence to provide you with automated defences against both known and unknown threats.



## Next Generation Firewalls

We deliver next-generation firewalls that provide you with the best possible security. Palo Alto solutions leverage machine learning for proactive real-time and inline zero-day protection allowing you to consistently stay ahead of unknown threats whilst giving you full visibility of all your network including IoT devices.

Palo Alto firewalls are at the forefront of cybersecurity technology and with specialist advice from Onwave, we can ensure they are implemented to provide maximum benefit to your organisation.

We also provide specialist firewalls for in core sectors such as Education where advanced web filtering is a priority.

## Antivirus

We provide Sophos solutions to guard against malware, ransomware, exploits and viruses. Whichever method you choose, Onwave is here to guide, consult and implement the solution to give your organisation confidence with Cyber Security.

# Move.

## IN-VEHICLE SOLUTIONS

### The Netcase and WAN in a Van Solution

#### Improve the performance and communication of your field staff

Onwave's in-vehicle solutions maximise the cellular network coverage across your operational area using cutting-edge bonded SIM technology.

Your data is secured within a private network and all devices are centrally managed through a cloud management platform that provides real time and historic vehicle location tracking, service availability and performance information.

Onwave support you with two separate solutions, these are the NetCase and WAN in a van.

#### NETCASE

The NetCase contains a powerful SD-WAN router capable of combining the service from four mobile networks, eliminating the reliance on a single provider and is a complete "network in a box" built for the harshest environments in IP rated pelicase, containing:

- A powerful quad SIM cellular router
- High gain Mi-Mo antennas
- Rechargeable batteries with 12 hours continual operation\*
- Inbuilt Wi-Fi allowing multiple smart devices to connect
- Dual USB outputs for charging devices\*
- External LAN ports for connecting devices via Ethernet without opening the case

#### WAN IN A VAN

Multi-network bonded cellular backhaul Internet connectivity is distributed in and around the vehicle via Wi-Fi.

Other equipment can be connected to this: onboard PTZ CCTV allowing remote access to live video data and local video recording for review, RFID readers for booking out stock/plant, vehicle ODB data and externally mounted safety sensors.



## Command and Control Vehicles

Assured connectivity at the hub of your site operations, designed with maximum performance and reliability in mind. Each vehicle will have the combined availability and bandwidth of all 4 UK mobile networks, even combining satellite as needed.

Secure access can be established to all the resources you require. IP telephony can be provided to ensure a consistent line of communication.

## Management and Visibility

As well as providing unrivalled levels of mobile connectivity, the NetCase comes with:

- Inbuilt location tracking so you know where your field operatives are at all times
- Cloud management platform capable of running reports for data usage and much more
- Globally available Mobile Networks

NetCase is ideal for remote and mobile work crews where connectivity is critical for works, information and communication



# OWL.

## GEO-LOCATION PLATFORM

Enhancing projects with location data

### Protecting People. Improving Productivity.

The challenges of managing and ensuring the safety of remote workers and teams has gone unchanged for years. By leveraging millimetre-accurate location data, mobile application technology and a cloud based always available portal, OWL helps teams and organisations deliver safer and more productive projects.

Managing and monitoring projects and supporting your team, equipment and vehicles has never been easier. **The OWL Platform** provides an intuitive, user-friendly platform, powered with geofencing technology to support managers, supervisors and staff.

#### VISUALISE

Helping your team in the field to visualise and understand their working environments before setting foot on site. OWL makes it easy to convert plans into reality in a simple to digest format.

#### NOTIFY

Instantly notify workers of hazards and risks relevant to their location. Automate lone worker processes to monitor staff and ensure supervisors can quickly identify issues and take prompt action.

#### MANAGE

Create interactive and up-to-date work assignments for your teams with OWL Tasks. See real-time progress from the point of delivery, manage assets and keep your team safe.

#### ANALYSE

Generate reports based on data collected by the OWL Platform for easy analysis. Reports can be used to benchmark performance and analyse on-site events.



### Safety

The OWL Platform uses geofencing technology and location-based data to ensure that your team are kept out of harm's way. With the Zones feature, project managers can highlight on-site hazards and plan reliable routes for workers, helping you to create a safe and efficient working environment.

- Locate workers and important assets
- Share important information with your team
- Help ensure safety of lone workers

### Productivity

With OWL, project managers can oversee important assets, distribute workloads and analyse project performance. OWL Live View and custom Dashboard features help you optimise delivery, output and utilisation.

- Receive real-time progress updates
- Benchmark future performance
- Promote data-driven decision making

### Environmental

If not properly regulated, construction projects can cause serious impact or harm to the local environment. The OWL Platform can help your site protect the environment including flora and fauna, as well as manage your carbon footprint and deliver a positive legacy.

- Identify SSSIs near your project
- Monitor CO<sub>2</sub> emissions
- Protect local ecosystems

### Regulatory

Complying with regulation can often be a time-consuming and frustrating process. The OWL Platform can save you time by automating bespoke reports by automating data collection and providing an intact audit trail.

- Analyse historical on site events
- Interrogate and export data
- Demonstrate compliance



# CAP.

## CONNECTED AND AUTONOMOUS PLANT

Revolutionising the construction sector in the digital age

Control your plant using sensors and wireless data

---

### WHAT IS IT?

---

CAP will revolutionise the construction sector, making work safer and quicker as well as bringing environmental benefits.

The term Connected and Autonomous Plant refers to construction plant that is connected to its environment through sensors or wireless transfer of data between a remote operator while the autonomy element refers to aspects of the vehicle's operation and movement around a site.

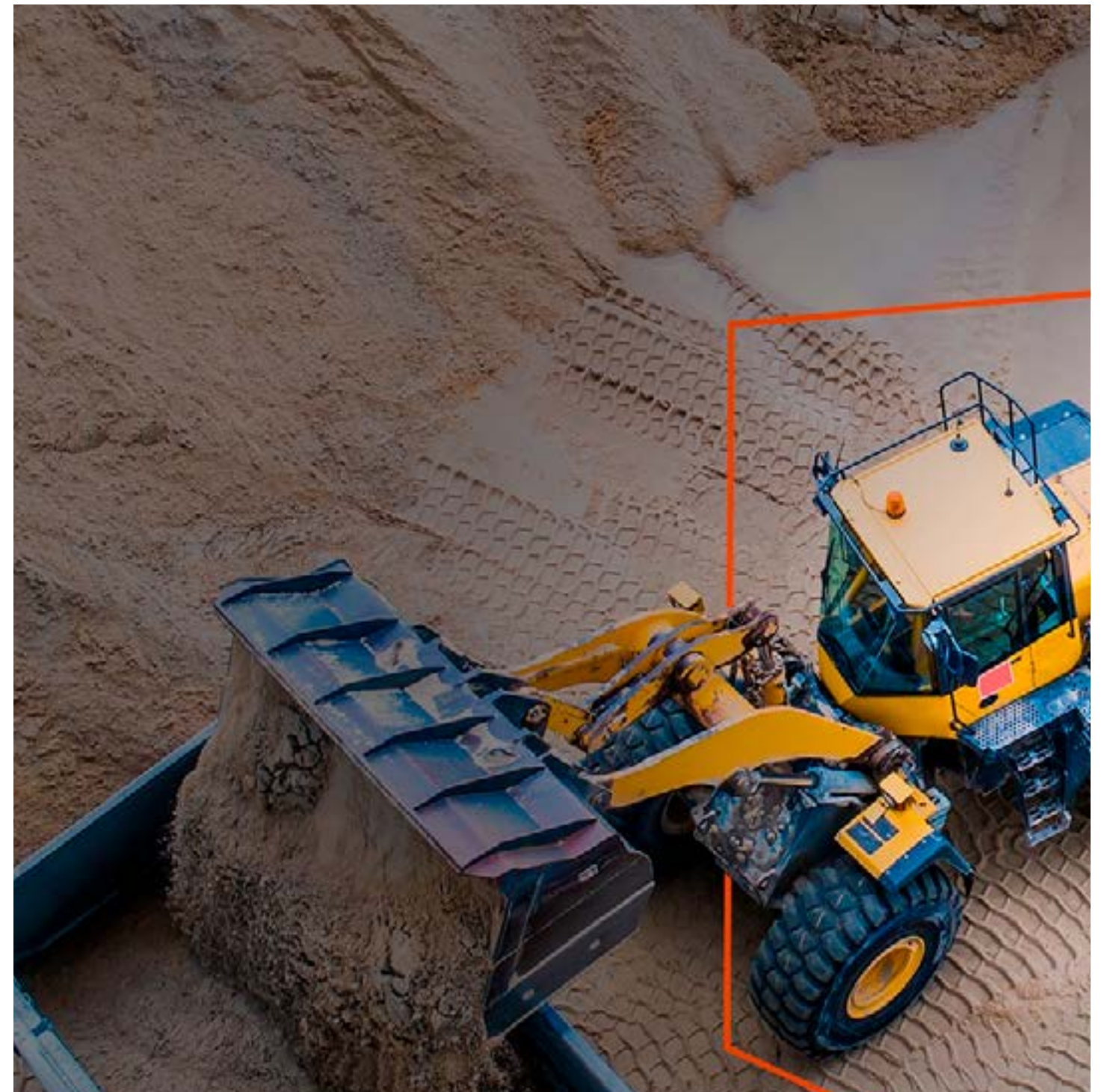
This technology is becoming more prominent and creates opportunities to introduce new technologies to automate some activities. Especially those that require manual labour and human interventions.

---

### WHAT ARE THE BENEFITS?

---

- Health and safety, removing the human from dangerous situations.
- Efficiency improvements – better use and allocation of resources and access native skills of the digital generation.
- Bridges the skills gap in the industry.
- Better work/life balance for operators, based at regular office, not remote construction sites.
- Environmental - reduction in idling and travel to site.
- Right the first time - reduced re-work and disruption



## Leaders in The Field

Onwave is a leader in this field from our work with Tier 1 contractors on large UK civils projects and sites as well as working with the manufacturers to ensure the delivered solutions match the principles and needs of the CAP Roadmap launched by National Highways and i3P jointly in June 2020.

This identified challenges and workstreams to support a goal of making automation business as usual in construction by 2035.

Onwave's specialty is secure radio networks to provide the last mile to your plant and then off site to your plant operators.



# Design.

## DIGITAL SIGNAGE AND FITOUT

Keeping your company visible and effective

Use signage and design your control room to maximise impact

Onwave works in partnership with both Hardhat Media and Belton Consulting. Working in partnership allows us to offer you more services that ensure your working environment is suited to your requirements.

Hardhat Media allow us to offer the benefit of digital signage and gives you access to a interactive and dynamic way of sharing information with your team members.

Belton Consulting allows us to be there for you when designing your control room and office concepts to fitting and reaching your office goals. Ensuring your office space is well-matched enables you to preempt and resolve any eventuality.

### WHAT ARE THE BENEFITS OF DIGITAL SIGNAGE?

- Consistent messaging to be delivered across the project and sites to all team members
- Messaging can be controlled centrally to deliver instant updates to satellite sites.
- A rapid and effective way of communicating the wider team and even members of the public.

### WHAT ARE THE KEY FOCUSES FOR CONTROL ROOMS?

- Ensuring your consoles are ergonomic
- Creating effective operations
- Maximise the value of physical assets and staff
- Minimising operational costs



## Digital Technology

With the benefits of digital technology becoming more and more evident, it is important that you are utilising this for you and your teams. Keeping your systems and networks up to date and relevant means that you can unlock your potential.

According to a study by MIT and Deloitte 91% of employees want digital transformation as they believe it can fundamentally transform the way people in their organisation work.

# Meet the Team

What sets us apart is **our people**, those who deliver the Onwave experience every day for our customers.

## LEADERSHIP



**SEAN MCKEAGUE**  
Executive Director

Sean founded Onwave to change the way that connectivity is delivered to the infrastructure sector. Sean previously led a successful technology contracting business in the Rail Sector and brings his wide ranging business experience to Onwave.



**STUART LADBROOK**  
Chief Executive Officer

Stuart's leadership has been at the heart of Onwave's growth since joining in 2011 following senior roles at Mouchel and Thales. Stuart has over 25 years of experience in the Telecoms, Construction and Rail sectors.



**JAY MOORHOUSE**  
Chief Operating Officer

Jay brings a wide range of infrastructure project experience to the Onwave team. Jay is a Fellow of the Institution of Civil Engineers and the Chartered Institute of Highways and Transportation with over 20 years experience.



**SIMON ROMP**  
Chief Technology Officer

Simon is responsible for setting the technical direction for Onwave products and services. Simon brings over 20 years experience designing and implementing per formant and resilient software both on premise and in the cloud.



**MATTHEW BASS**  
Full Stack Developer

Matthew is responsible for co-designing, building, testing and implementing software solutions here at Onwave. Matthew previously worked in the publishing sector writing APIs, bespoke XML applications and automated publishing work flows. He has over 10 years programming experience.



**DANA KONKIN**  
Head of Network Engineering

Dana leads our Network Engineering function. Dana has previously worked as a Senior Network Engineer for Ericsson and Huawei and has over 30 years experience in network design and implementation.



**MATHEW KNIGHT**  
Network Operations Manager

Mathew is a highly skilled and experienced Network Engineer with a passion for design, implementation and innovation. Mathew joined Onwave in 2016 from the South East Coast Ambulance Service and leads the Network Operations team delivering and supporting our customers.

## CUSTOMER SUCCESS



**SUSANNE CUBEL-KING**  
Director of People and Culture

Susanne leads our Customer Operations team delivering hassle-free deployments for our Customers around the UK and Europe.



**PETER FISHER**  
Head of Sales

Peter works with both existing and new companies to identify opportunities for product development. Peter brings to Onwave over 20 years experience in the Communications industry.



**ANDY MEHAFFEY**  
Managing Director - Rail Solutions

Andy joined Onwave in 2023 as Managing Director - OWL Rail, Andy has worked in the civil engineering and rail industries for the past 30 years, he has been a contributing member to significant initiatives.



**ROSEMARIE CONNELL**  
Financial Controller

Rosemarie is a Chartered Accountant and Tax Consultant and has led the Finance Team at Onwave since the business started.



**CHRIS HALL**  
Commercial Manager

Chris recently joined the Onwave Team following nine years at BAM Nuttall. Chris is a Fellow of the Royal Institution of Chartered Surveyors and is a Chartered Engineering Surveyor.



**JADE LE GRAY-WISE**  
Business Support Manager

Jade joined the Onwave team in 2017 and is focussed on ensuring the Onwave service always meets the highest possible standards demanded by our Customers.

## BUSINESS SUPPORT



# Join Industry Leaders

At Onwave, we deliver connectivity to leading blue-chip organisations, helping them to leverage connectivity to empower their digital aspirations and deliver their business goals.

We are continually striving to help customers embrace the benefits of being better connected.

Onwave can help ensure you have a secure and successful digital journey. If your organisation wants to explore our products and services to help you unleash your full potential, **contact us today.**

**Connect with Onwave Today**





# GET IN TOUCH



4 Abbey Wood Road,  
Kings Hill, West Malling,  
Kent, ME19 4AB



0844 775 0000



[sales@onwave.com](mailto:sales@onwave.com)